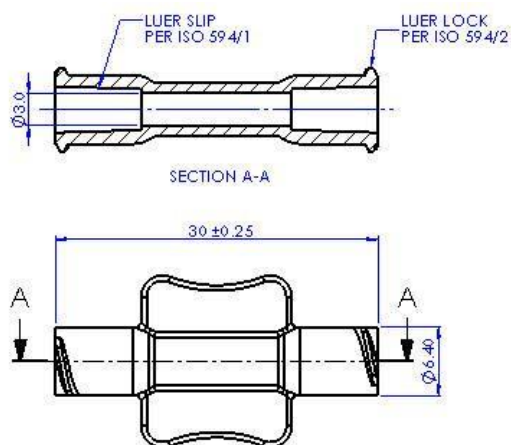


Double Female Adaptor

Assemble your kit or line without reconfiguring by using our convenient female to female luer lock connector.

- Wide-winged connector securely fastens two male luer lock components together quickly and easily.
- Threads on the exterior collar provide torquing connections to the interior threads of male ended components.



Part Number	Material	Gamma Resistance
D10-000-131	ABS TERLUX 2802	O
D10-000-331	PC MAKROLON 1805 451118	O